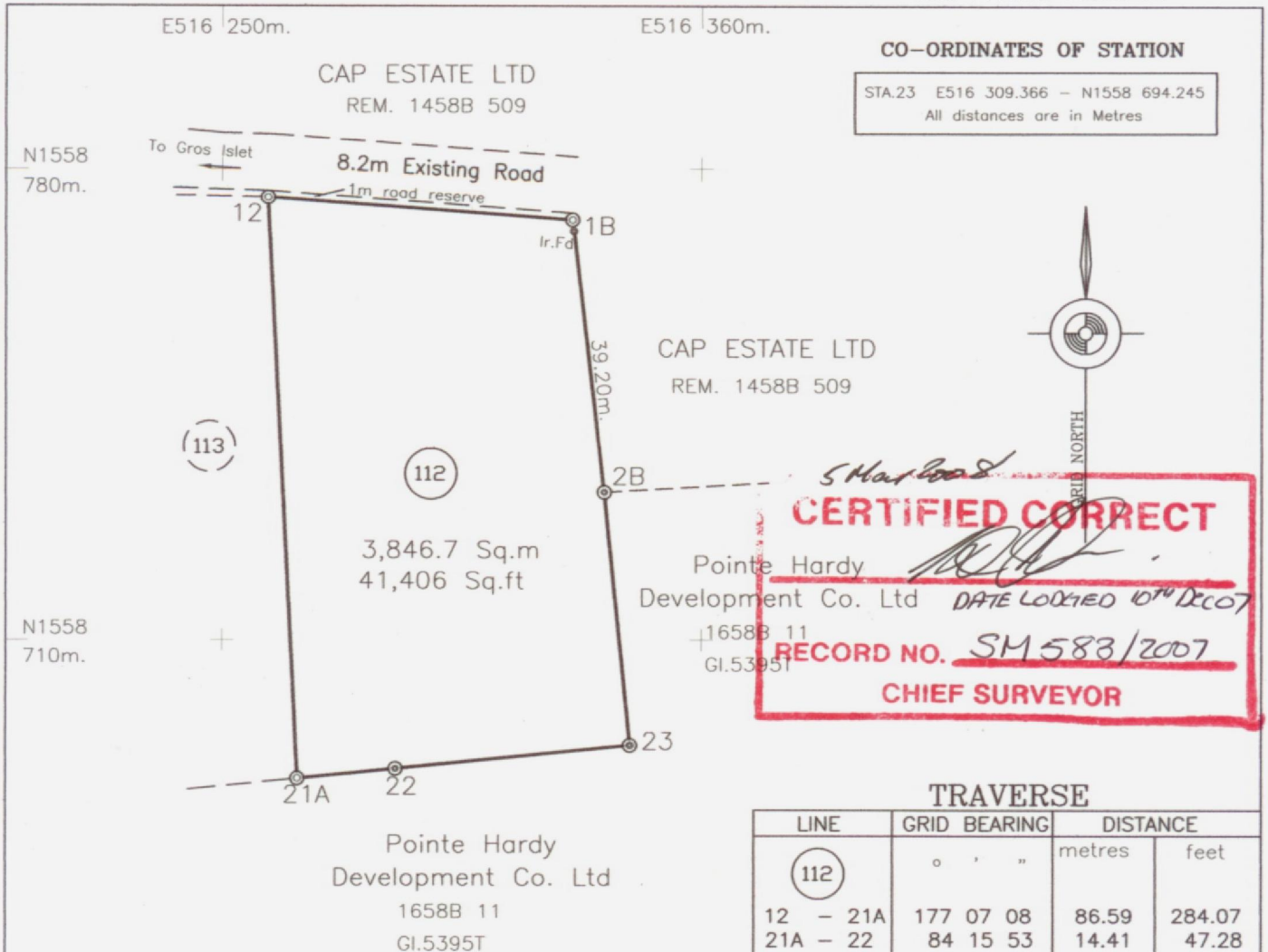
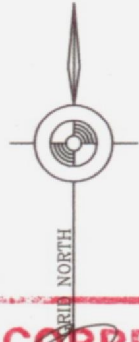


NOW PARCEL 1658B 24



CO-ORDINATES OF STATION

STA.23 E516 309.366 - N1558 694.245
All distances are in Metres



CERTIFIED CORRECT
Pointe Hardy
Development Co. Ltd
RECORD NO. SM 583/2007
CHIEF SURVEYOR

TRAVERSE

LINE	GRID BEARING	DISTANCE	
		metres	feet
(112)	o . . "		
12 - 21A	177 07 08	86.59	284.07
21A - 22	84 15 53	14.41	47.28
22 - 23	84 15 53	34.41	112.89
23 - 2B	354 15 41	37.76	123.87
2B - 1B	353 26 22	40.89	134.16
1B - 12	274 21 17	44.60	146.31

MEMO.

The survey was executed between 6th and 7th August 2007.
Instruments used were a Topcon GTS 226 and 60m Offset Tape.
Reference was made to Plans GI.5202R and GI.5395T.
Grid Co-ordinates were obtained by traverse from Trig Station DOS 133.
DCA Approval 882/2006.
Survey is currently Part of Parcel 1458B 509

LEGEND

- ⊙ Traverse station, iron in concrete found
- ⊙ Traverse station, iron in concrete put
- ⊙ Traverse station, wood peg
- Iron in concrete put
- Iron in concrete found

(sgd.)RUFINUS BAPTISTE
Licensed Land Surveyor



Scale 1 : 1000

CASTRIES ST. LUCIA

DRAWING No: G.I. 5457

DRAWN By: (sgd.)R. BAPTISTE

SURVEYED By: (sgd.)R. BAPTISTE
Lic. Land Surveyor

DATE: 26th October 2007.

Extract of Lot 112 from a
Plan Showing survey of Sixteen (16) Lots
located at CAP ESTATE (MOUNT HARDY)
Quarter of GROS ISLET
made at the instance of
CAP ESTATE LTD.