

NOW PARCEL 1658B 25

E516 | 190m.

E516 | 260m.

CAP ESTATE LTD
REM. 1458B 509

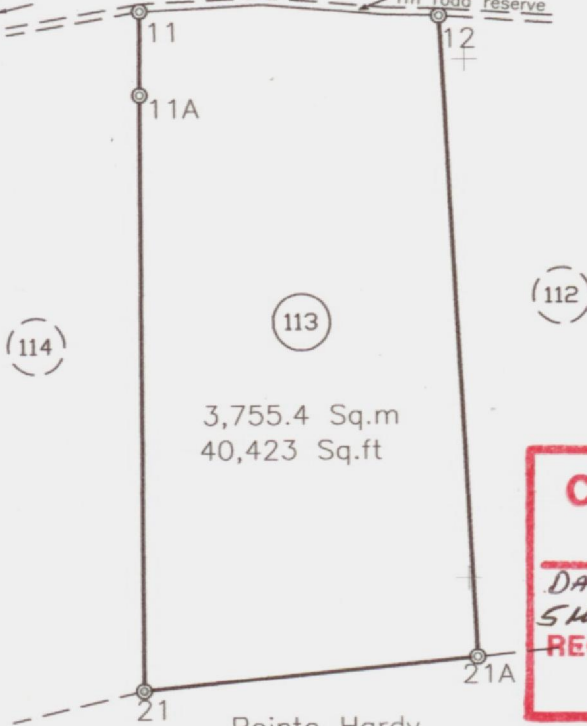
CO-ORDINATES OF STATION

STA.21 E516 216.662 - N1558 684.922
All distances are in Metres

N1558
770m.

N1558
700m.

To Other Lots
8.2m Existing Road
1m road reserve



3,755.4 Sq.m
40,423 Sq.ft

CERTIFIED CORRECT
[Signature]
DATE LODGED 10th DEC 2007
5 May 2008
RECORD NO. SM 583 / 2007
CHIEF SURVEYOR

Pointe Hardy
Development Co. Ltd.
1658B 11
GI.5395T

TRAVERSE

LINE	GRID BEARING	DISTANCE	
		metres	feet
(113)	o . "		
11 - 11A	180 40 32	11.34	37.21
11A - 21	180 05 23	80.51	264.13
21 - 21A	84 15 53	44.36	145.55
21A - 12	357 07 09	86.59	284.07
12 - 11	271 20 33	39.52	129.66

MEMO.

The survey was executed between 6th and 7th August 2007.
Instruments used were a Topcon GTS 226 and 60m Offset Tape.
Reference was made to Plans GI.5202R and GI.5395T.
Grid Co-ordinates were obtained by traverse from Trig Station DOS 133.
DCA Approval 882/2006.
Survey is currently Part of Parcel 1458B 509

LEGEND

- ⊙ Traverse station, iron in concrete found
- ⊙ Traverse station, iron in concrete put

(sgd.)RUFINUS BAPTISTE
Licensed Land Surveyor



Scale 1 : 1000

CASTRIES ST. LUCIA

DRAWING No: G.I. 5457 T

DRAWN By: (sgd.)R. BAPTISTE

SURVEYED By: (sgd.)R. BAPTISTE
Lic. Land Surveyor

DATE: 26th October 2007.

Extract of Lot 113 from a
Plan Showing survey of Sixteen (16) Lots
located at CAP ESTATE (MOUNT HARDY)
Quarter of GROS ISLET
made at the instance of
CAP ESTATE LTD.