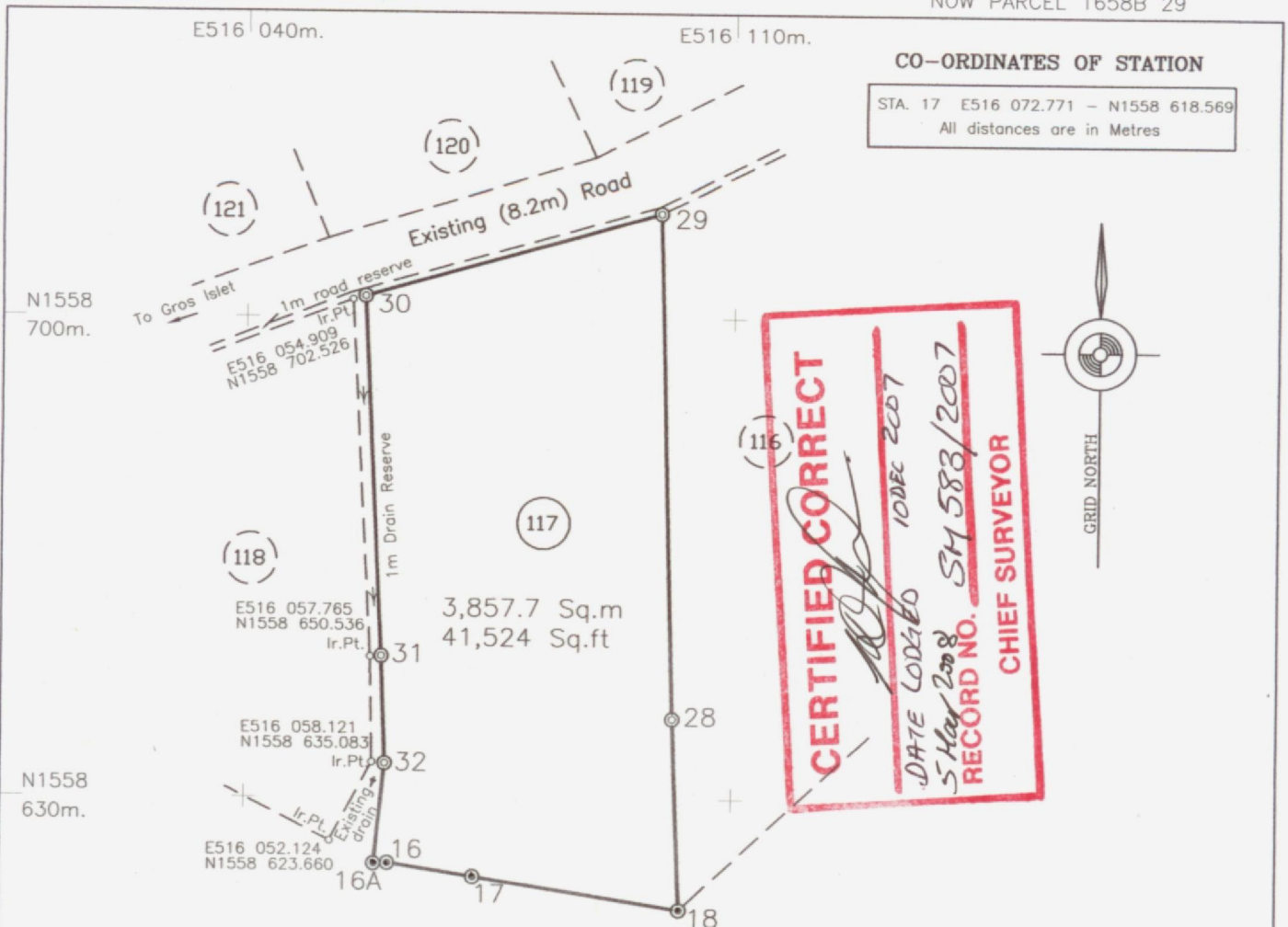


NOW PARCEL 1658B 29



**CO-ORDINATES OF STATION**

STA. 17 E516 072.771 - N1558 618.569  
All distances are in Metres

Pointe Hardy Development Co. Ltd  
1658B 11  
GI.5395T

**TRAVERSE**

LINE	GRID BEARING	DISTANCE	
		metres	feet
(117)	o . "		
18 - 28	357 37 0'	27.76	91.08
28 - 29	358 22 00	73.48	241.09
29 - 30	254 04 56	44.14	144.80
30 - 31	177 05 46	52.49	172.21
31 - 32	177 47 07	15.69	51.48
32 - 16A	185 57 13	14.60	47.90
16A - 16	87 53 49	2.00	6.56
16 - 17	98 54 21	12.42	40.75
17 - 18	98 54 21	29.96	98.29

**MEMO.**

The survey was executed between 6th and 7th August 2007.  
Instruments used were a Topcon GTS 226 and 60m Offset Tape.  
Reference was made to Plans GI.5202R and GI.5395T.  
Grid Co-ordinates were obtained by traverse from Trig Station DOS 133.  
DCA Approval 882/2006.  
Survey is currently Part of Parcel 1458B 509

**LEGEND**

- ⊙ Traverse station, iron in concrete found
- ⊙ Traverse station, iron in concrete put
- Iron in concrete put

(sgd.)RUFINUS BAPTISTE  
Licensed Land Surveyor



Scale 1 : 1000

**CASTRIES ST. LUCIA**

DRAWING No: G.I. 5457 T

DRAWN By: (sgd.)R. BAPTISTE

SURVEYED By: (sgd.)R. BAPTISTE  
Lic. Land Surveyor

DATE: 26th October 2007.

Extract of Lot 117 from a  
Plan Showing survey of Sixteen (16) Lots  
located at CAP ESTATE (MOUNT HARDY)  
Quarter of GROS ISLET  
made at the instance of

**CAP ESTATE LTD.**