

NOW PARCEL 1658B 31

N1558

E516 070m.

E516 140m.

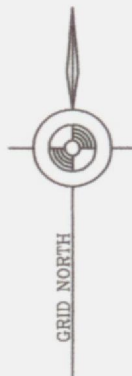
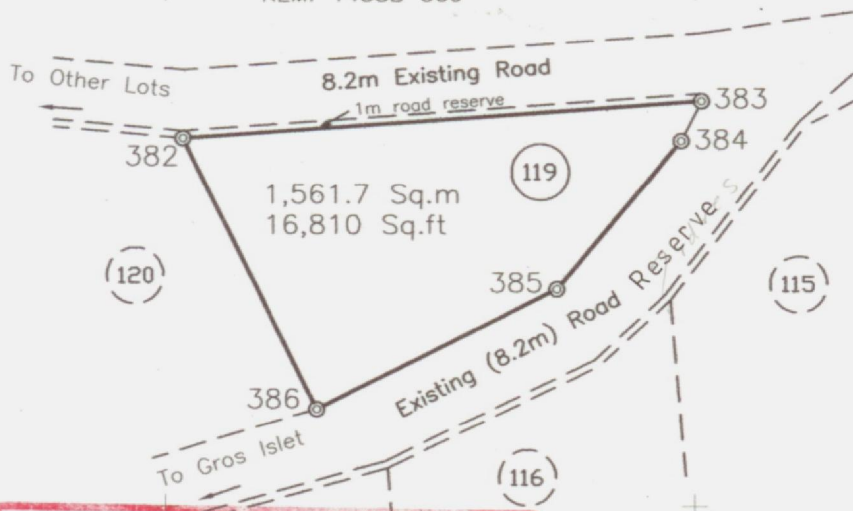
CO-ORDINATES OF STATION

STA.382 E516 071.998 - N1558 759.590
All distances are in Metres

N1558
780m.

CAP ESTATE LTD
REM. 1458B 509

N1558
710m.



CERTIFIED CORRECT
[Signature]
DATE LADDED 10th Dec 2007
5 Mar 2008
RECORD NO. SM 583/2007
CHIEF SURVEYOR

TRAVERSE

LINE	GRID BEARING	DISTANCE	
		metres	feet
(119)	o . . "		
382 -386	154 08 02	40.59	133.17
386 -385	63 00 50	35.58	116.72
385 -384	39 27 11	25.89	84.94
384 -383	26 18 21	6.00	19.69
383 -382	265 50 13	68.73	225.48

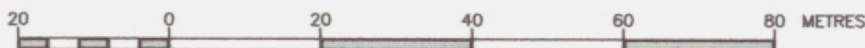
MEMO.

The survey was executed between 6th and 7th August 2007.
Instruments used were a Topcon GTS 226 and 60m Offset Tape.
Reference was made to Plans GI.5202R and GI.5395T.
Grid Co-ordinates were obtained by traverse from Trig Station DOS 133.
DCA Approval 882/2006.
Survey is currently Part of Parcel 1458B 509

LEGEND

- ⊙ Traverse station, iron in concrete found
- ⊙ Traverse station, iron in concrete put
- ⊙ Traverse station, wood peg
- Iron in concrete put
- Iron in concrete found

(sgd.)RUFINUS BAPTISTE
Licensed Land Surveyor



Scale 1 : 1000

CASTRIES ST. LUCIA

DRAWING No: G.I. 5457 T

DRAWN By: (sgd.)R. BAPTISTE

SURVEYED By: (sgd.)R. BAPTISTE
Lic. Land Surveyor

DATE: 26th October 2007.

Extract of Lot 119 from a
Plan Showing survey of Sixteen (16) Lots
located at CAP ESTATE (MOUNT HARDY)
Quarter of GROS ISLET
made at the instance of
CAP ESTATE LTD.