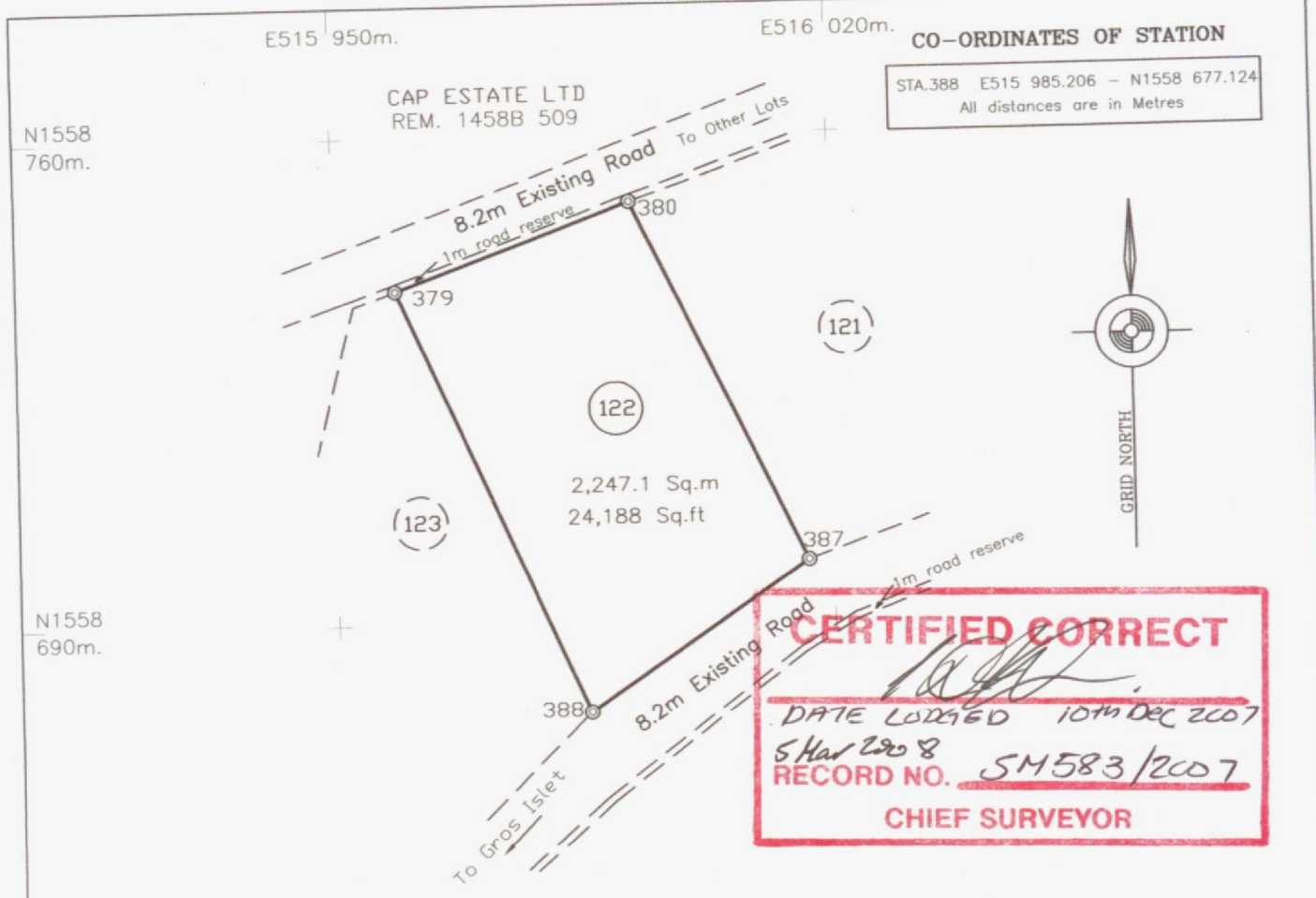


NOW PARCEL 1458B 512



MEMO.

The survey was executed between 6th and 7th August 2007. Instruments used were a Topcon GTS 226 and 60m Offset Tape. Reference was made to Plans G1.5202R and G1.5395T. Grid Co-ordinates were obtained by traverse from Trig Station DOS 133. DCA Approval 882/2006. Survey is currently Part of Parcel 1458B 509

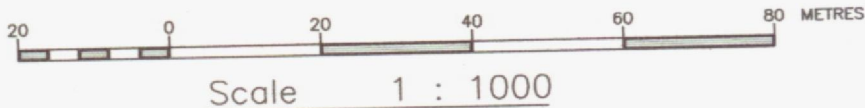
TRAVERSE

| LINE | GRID BEARING | DISTANCE | |
|----------|--------------|----------|--------|
| | | metres | feet |
| (122) | o ' " | | |
| 379 -388 | 156 27 31 | 66.52 | 218.25 |
| 388 -387 | 55 17 25 | 37.75 | 123.84 |
| 387 -380 | 334 51 36 | 57.42 | 188.38 |
| 380 -379 | 249 23 37 | 35.48 | 116.39 |

LEGEND

- ⊙ Traverse station, iron in concrete found
- ⊖ Traverse station, iron in concrete put
- ⊘ Traverse station, wood peg
- Iron in concrete put
- Iron in concrete found

(sgd.)RUFINUS BAPTISTE
Licensed Land Surveyor



CASTRIES ST. LUCIA
DRAWING No: G.I. 5457 T
DRAWN By: (sgd.)R. BAPTISTE
SURVEYED By: (sgd.)R. BAPTISTE
Lic. Land Surveyor
DATE: 26th October 2007.

Extract of Lot 122 from a Plan Showing survey of Sixteen (16) Lots located at CAP ESTATE (MOUNT HARDY) Quarter of GROS ISLET made at the instance of CAP ESTATE LTD.