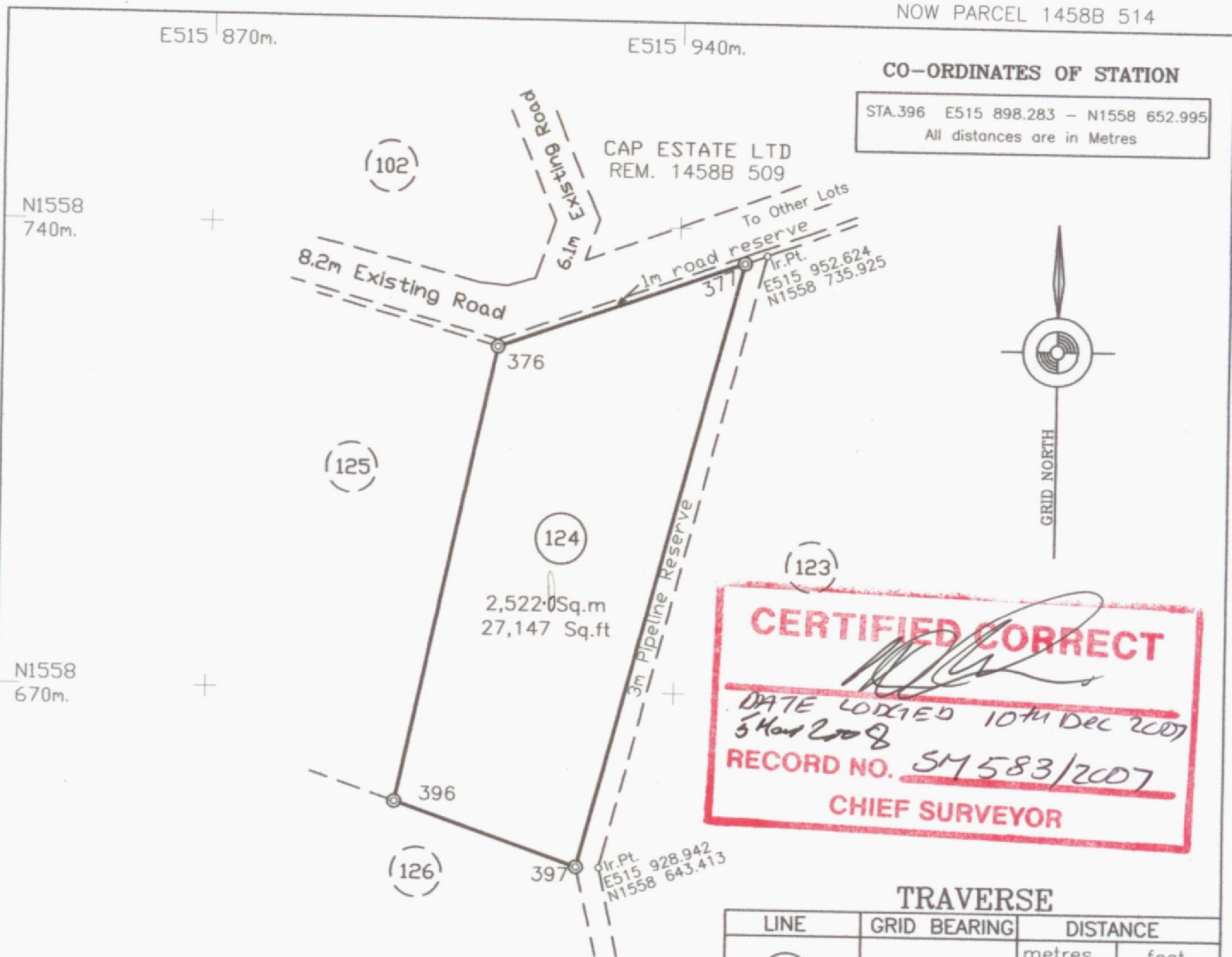


NOW PARCEL 1458B 514



CO-ORDINATES OF STATION

STA.396 E515 898.283 - N1558 652.995
All distances are in Metres

CERTIFIED CORRECT
[Signature]
DATE LODGED 10th Dec 2007
5 Nov 2008
RECORD NO. SM 583/2007
CHIEF SURVEYOR

TRAVERSE

LINE	GRID BEARING	DISTANCE	
		metres	feet
(124)	o . "		
376 -396	191 52 08	70.25	230.48
396 -397	109 15 31	28.87	94.71
397 -377	14 37 35	94.33	309.47
377 -376	250 27 38	38.86	127.49

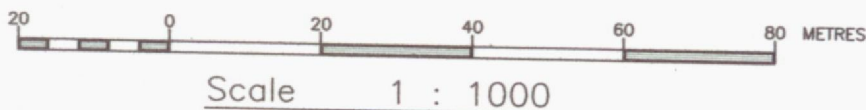
MEMO.

The survey was executed between 6th and 7th August 2007.
Instruments used were a Topcon GTS 226 and 60m Offset Tape.
Reference was made to Plans GI.5202R and GI.5395T.
Grid Co-ordinates were obtained by traverse from Trig Station DOS 133.
DCA Approval 882/2006.
Survey is currently Part of Parcel 1458B 509

(sgd.)RUFINUS BAPTISTE
Licensed Land Surveyor

LEGEND

- ⊙ Traverse station, iron in concrete found
- ⊙ Traverse station, iron in concrete put
- ⊙ Traverse station, wood peg
- Iron in concrete put
- Iron in concrete found



CASTRIES ST. LUCIA

DRAWING No: G.I. 5457 T

DRAWN By: (sgd.)R. BAPTISTE

SURVEYED By: (sgd.)R. BAPTISTE
Lic. Land Surveyor

DATE: 26th October 2007.

Extract of Lot 124 from a
Plan Showing survey of Sixteen (16) Lots
located at CAP ESTATE (MOUNT HARDY)
Quarter of GROS ISLET
made at the instance of
CAP ESTATE LTD